



Jasmine View, 24 Moncktons Lane, Maidstone, ME14 2PY
£440,000

About this property.....

Tucked away on a QUIET, PRIVATE TRACK, yet just moments from the vibrant heart of Maidstone, this stunning FOUR-BEDROOM DETACHED FAMILY HOME offers an exceptional blend of space, style, and modern living.

The ground floor boasts an impressive OPEN-PLAN KITCHEN, DINING & LOUNGE AREA—perfect for entertaining and family gatherings. A LARGE CONSERVATORY floods the space with natural light, while a DOWNSTAIRS W.C. and a front facing bedroom add to the home's practicality.

Upstairs, you'll find THREE GENEROUSLY SIZED BEDROOMS and a CONTEMPORARY FAMILY BATHROOM, all finished to a high standard.

Externally, the LANDSCAPED REAR GARDEN offers a fantastic outdoor retreat, featuring a spacious lawn, a patio area, and convenient SIDE ACCESS. The front patio and steps lead down to your own OFF-ROAD PARKING and GARAGE, completing this exceptional home.

Situation.....

Nestled down a private track, this property offers a secluded location within easy reach of urban amenities and transportation links. Maidstone East station is a mere 3-minute drive (0.8 miles) away, providing swift access to London Bridge in just 52 minutes and Victoria in 1 hour and 3 minutes. For commuters seeking further connectivity, Ebbsfleet station is a convenient 22-minute drive (17 miles) distant, offering high-speed trains to London St Pancras in a mere 19 minutes. Nature enthusiasts will delight in the proximity to the River Medway, just a few minutes' walk away, offering scenic pathways for walks, runs, and bike rides along the riverbanks. Watersport aficionados can indulge in rowing and kayaking activities, with clubs conveniently situated nearby. Families will appreciate the proximity to two Ofsted-rated Good primary schools within a 5-minute drive, alongside an Ofsted-rated Good secondary school and girls' grammar just a stone's throw further. Additionally, the vibrant hub of Maidstone, with its multitude of shopping, dining, and entertainment options, is just minutes away by car, ensuring residents enjoy the perfect blend of tranquility and urban convenience.











PRIVATE & SECLUDED LOCATION – Nestled on a quiet private track, offering tranquility just moments from Maidstone's vibrant town centre.

SPACIOUS DETACHED FAMILY HOME – Modern four-bedroom property with generous living accommodation throughout.

IMPRESSIVE OPEN-PLAN LIVING – Large kitchen, dining & lounge area, perfect for entertaining and family life.

FANTASTIC OUTDOOR SPACE – Landscaped rear garden, spacious lawn, patio area, side access, and off-road **PARKING** with a **GARAGE**.

VERSATILE LAYOUT – Four well-sized bedrooms, including a ground-floor bedroom, ideal for guests or multi-generational living.

CLOSE TO NATURE – The River Medway is just a short walk away, offering scenic walking, running & cycling routes. Rowing & kayaking clubs nearby for watersports enthusiasts.

HIGHLY-RATED SCHOOLS NEARBY – Two Ofsted-rated 'Good' primary schools within a 5-min drive, plus a 'Good' secondary school and girls' grammar school close by.

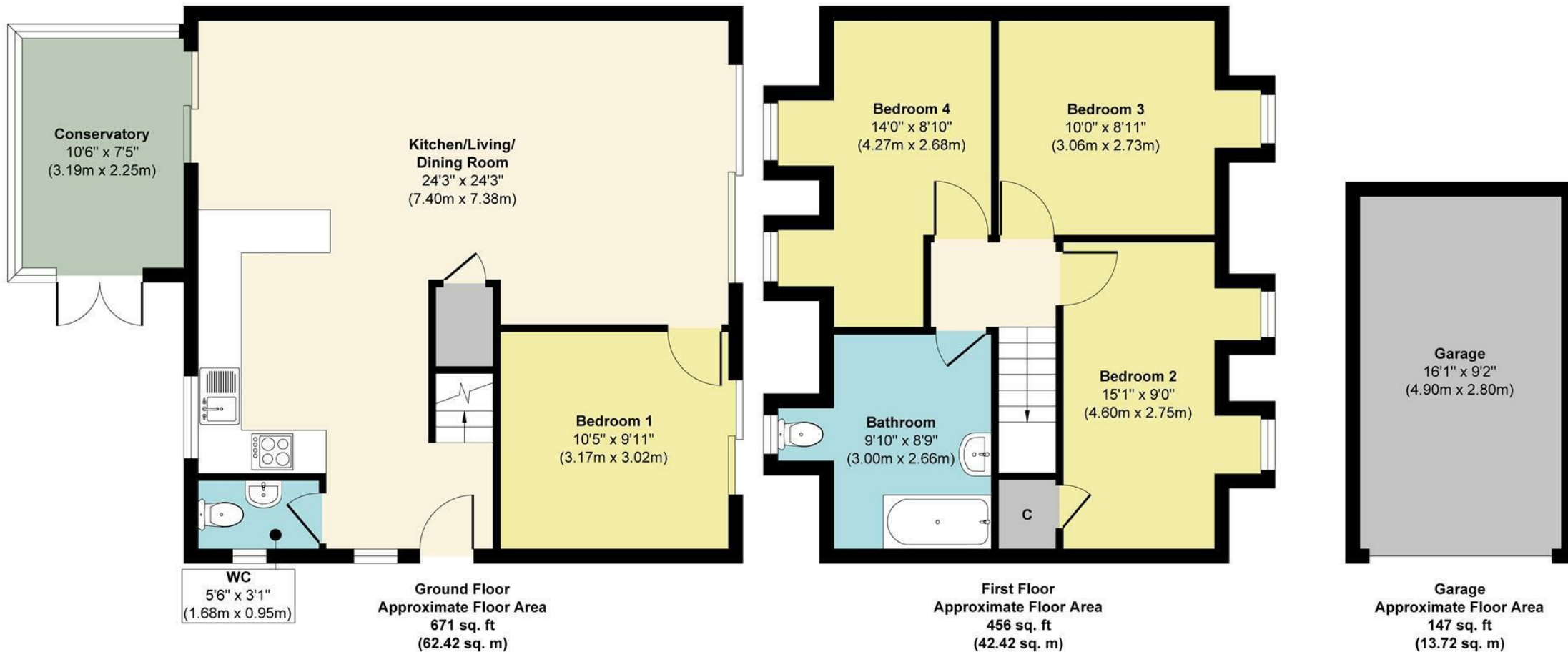
BRILLIANT TRANSPORT LINKS – Maidstone East station (0.8 miles, 3-min drive) offers direct trains to London Bridge (52 mins) and Victoria (1 hr 3 mins).

HIGH-SPEED TRAINS - Ebbsfleet station (22-min drive) provides high-speed trains to St Pancras in just 19 mins.





Jasmine View, 24 Moncktons Lane, Maidstone, ME14 2PY



Approx. Gross Internal Floor Area 1274 sq. ft / 118.56 sq. m (Including Garage)

Illustration for identification purposes only, measurements are approximate, not to scale.

Produced by Elements Property

Agents Notes

Floor plans produced for illustrative purposes only. The position and sizes of doors, windows, rooms and other items are approximate and no responsibility is taken for any error, omission or mis-statement. These particulars are produced for information only and do not form part of any contract. The agent has not had sight of any title documents. Fixtures, fittings and services not tested.



bluebell-estates.co.uk

